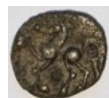
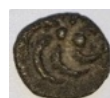


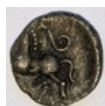
MK1



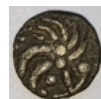
MK3



MK2



MK5



MK4



MK7



MK6



M1



M2



M3



M4



M5



M6



M7



M8



M9



M10





M11



M12



M13



M14



M15



M16



M17



M18





M19



M20



M21



M22



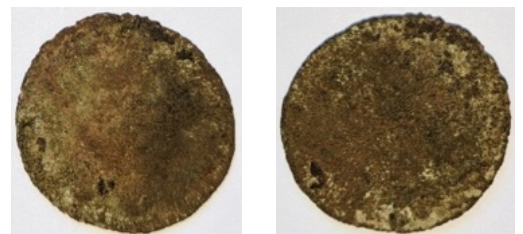
M23



M24

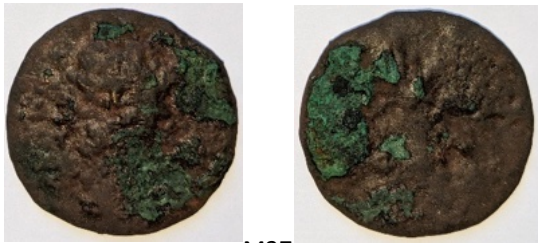


M25



M26

Tafel 5



M27



M28



M29



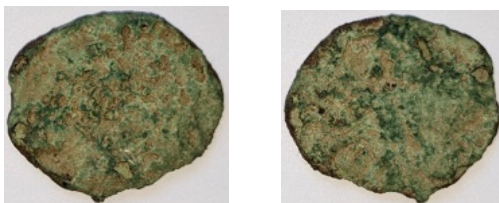
M30



M31



M32



M33



M34

Tafel 6



M35



M36



M37



M38



M39



M40



M41



M42



M43



M44



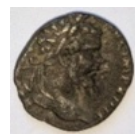
M45



M46



M47



M48



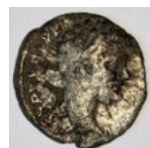
M49



M50



M51



M52

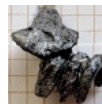


M53





Kat.-Nr. F1



Kat.-Nr. F2



Kat.-Nr. F3

Fibeln: Schüsselfibel (F2). Eisen – Almgren 65 (F1). Bronze. –  
Kräftig profilierte Fibel mit geschweiftem Bügel (F3). Bronze. M 1:1.





Kat.-Nr. F6



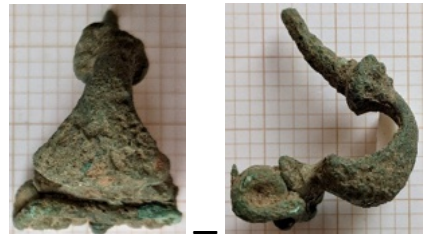
Kat.-Nr. F5



|



Kat.-Nr. F7



Kat.-Nr. F4



Kat.-Nr. F8



|



Kat.-Nr. F9



|

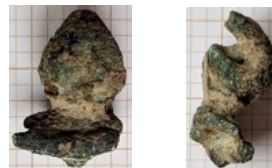


Kat.-Nr. F10

Fibeln: Kräftig profilierte Fibeln mit und ohne Stützplatte. Bronze. M 1:1.



Kat.-Nr. F11



Kat.-Nr. F12



Kat.-Nr. F13



Kat.-Nr. F14



Kat.-Nr. F15



Kat.-Nr. F16



Kat.-Nr. F17

Fibeln: Kräftig profilierte Fibeln mit und ohne Stützplatte. Bronze. M 1:1.



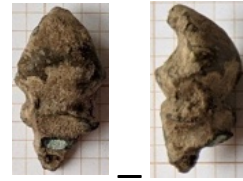
Kat.-Nr. F18



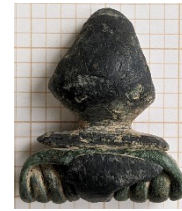
Kat.-Nr. F19



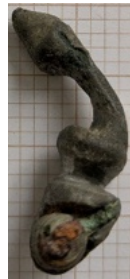
Kat.-Nr. F20



Kat.-Nr. F23



Kat.-Nr. F21



Kat.-Nr. F22



Kat.-Nr. F25



Kat.-Nr. F24



Kat.-Nr. F26

Fibeln: Kräftig profilierte Fibeln mit und ohne Stützplatte. Bronze. M 1:1.



Kat.-Nr. F28

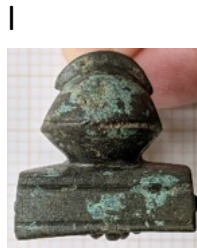


Kat.-Nr. F29



Kat.-Nr. F27

Fibeln: Kräftig profilierte Fibeln mit und ohne Stützplatte. Silber (Nr. F27), sonst Bronze. M 1:1.

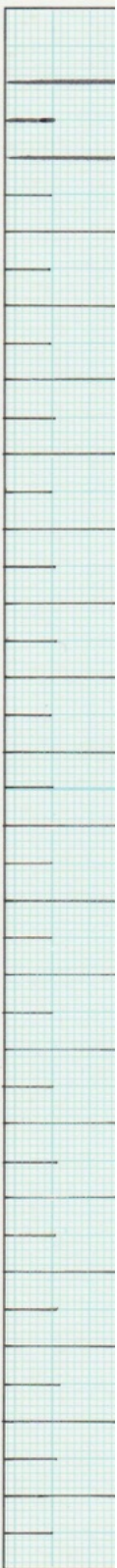


Kat.-Nr. F31



Kat.-Nr. F30

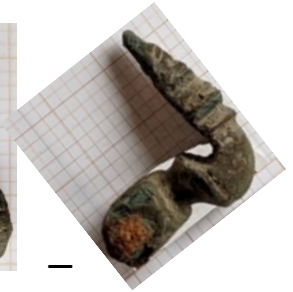
Fibeln: Kräftig profilierte Fibeln mit Spiralhülse. Bronze. M 1:1.



|



Kat.-Nr. F32



|



Kat.-Nr. F34



|



Kat.-Nr. F33



Kat.-Nr. F36

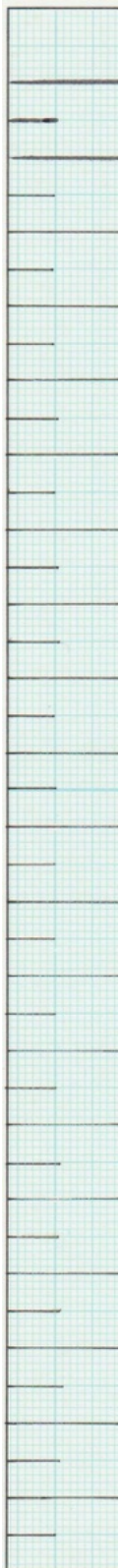


|

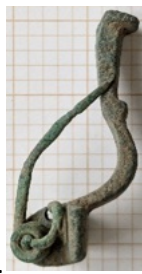


Kat.-Nr. F35

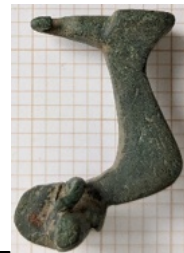
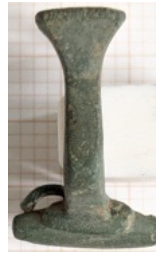
Fibeln: Kräftig profilierte Fibeln mit Spiralhülse. Bronze. M 1:1.



Kat.-Nr. F41



Kat.-Nr. F38



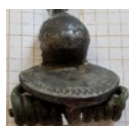
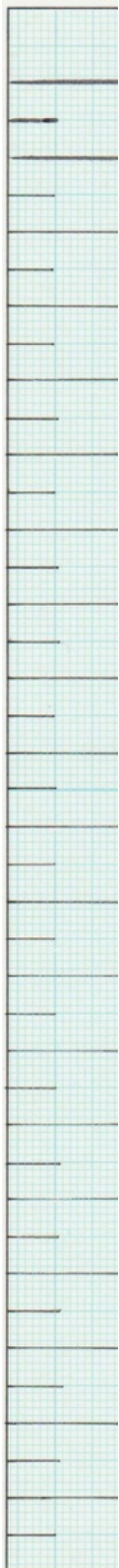
Kat.-Nr. F37



Kat.-Nr. F39

Fibeln: Kniefibeln. Bronze. M 1:1.





Kat.-Nr. F40

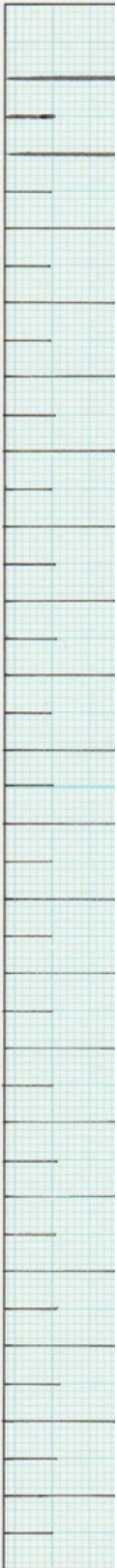
Fibeln: Kniefibel. Silber. M 1:1.



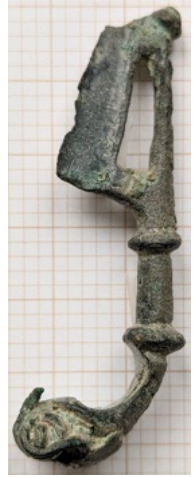
Kat.-Nr. F43



Fibeln: Norisch-pannonische Doppelknopffibel. Silber. M 1:1.



Kat.-Nr. F44



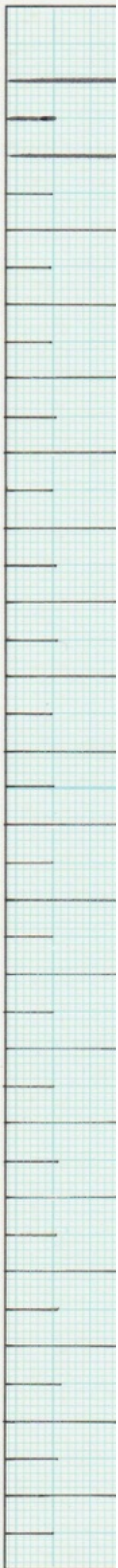
Kat.-Nr. F45



Kat.-Nr. F46



Kat.-Nr. F47



Kat.-Nr. F50



Kat.-Nr. F48



Kat.-Nr. F49

Fibeln: Norisch-pannonische Doppelknopffibeln. Bronze. M 1:1.



Kat.-Nr. F60

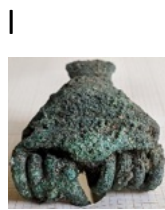
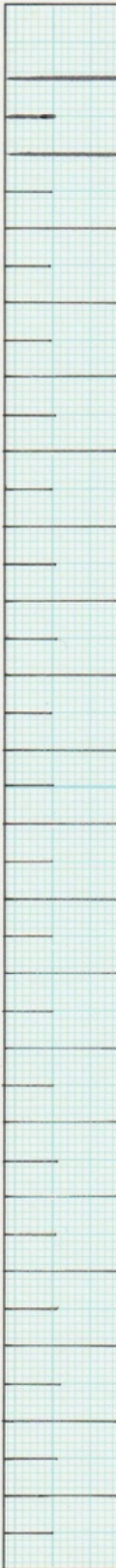


Kat.-Nr. F59



Kat.-Nr. F63

Fibeln: Norisch-pannonische Flügelfibeln. Bronze. M 1:1.

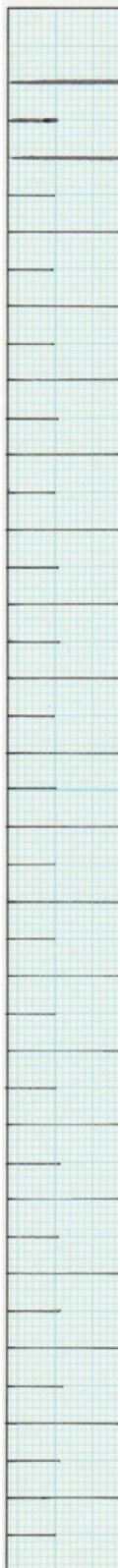


Kat.-Nr. F51



Kat.-Nr. F52





Kat.-Nr. F54



Zu Kat.-Nr. F52



Kat.-Nr. F55



Zu Kat.-Nr. F52



Kat.-Nr. F53



Kat.-Nr. F62



Kat.-Nr. F57



Kat.-Nr. F58



Kat.-Nr. F61



Kat.-Nr. F56

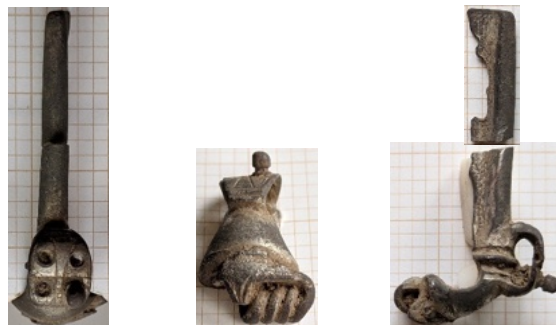


Kat.-Nr. F65



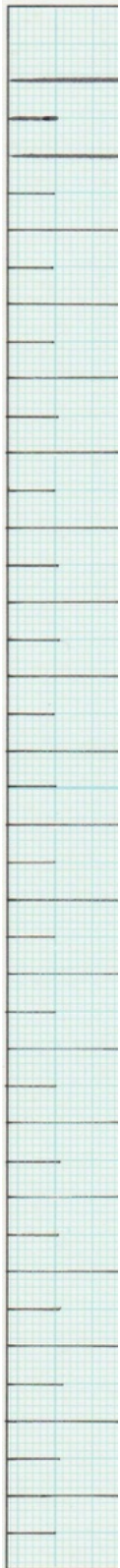
Kat.-Nr. F64

Fibeln: Norisch-pannonische Flügelfibeln. Bronze. M 1:2.



Kat.-Nr. F66

Fibeln: Norisch-pannonische Flügelfibel. Silber. M 1:1.



Kat.-Nr. F68



Kat.-Nr. F67



Kat.-Nr. F72



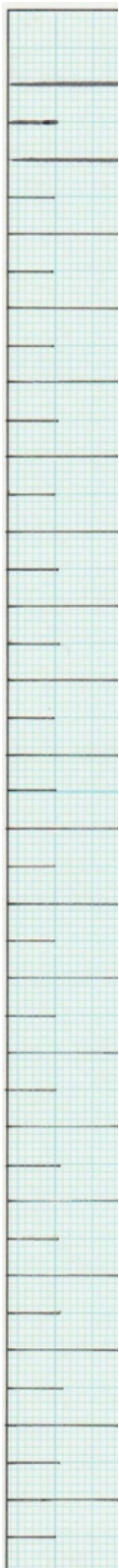
Kat.-Nr. F70



Kat.-Nr. F71



Kat.-Nr. F73



Kat.-Nr. F69



|



Kat.-Nr. F74

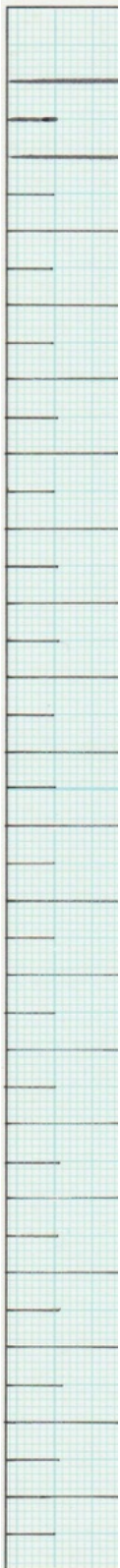


Kat.-Nr. F75



Kat.-Nr. F76





Kat.-Nr. S1



Kat.-Nr. S2



Kat.-Nr. S3



Kat.-Nr. S4



Kat.-Nr. S5



Kat.-Nr. S6



Kat.-Nr. S7



Kat.-Nr. S10



Kat.-Nr. S11



Kat.-Nr. S8



Kat.-Nr. S9



Kat.-Nr. S12



Kat.-Nr. S13



Kat.-Nr. S15



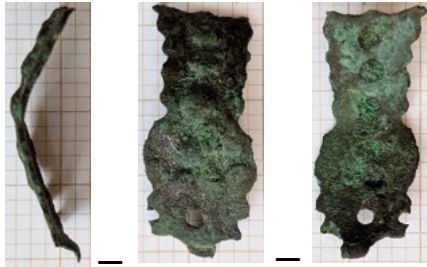
Kat.-Nr. S17



Kat.-Nr. S14



Kat.-Nr. S19



Kat.-Nr. S16



Kat.-Nr. K2



Kat.-Nr. S18



Kat.-Nr. K1



Kat.-Nr. K7

Kat.-Nr. K8

Kat.-Nr. K9

Kat.-Nr. K10



Kat.-Nr. K11



Kat.-Nr. K12



Kat.-Nr. K13



Kat.-Nr. K14



Kat.-Nr. K15



Kat.-Nr. K16



Kat.-Nr. K17



Kat.-Nr. K18



Kat.-Nr. K19



Kat.-Nr. K20



Kat.-Nr. K23



Kat.-Nr. K21



Kat.-Nr. K22



Kat.-Nr. K27



Kat.-Nr. K25



Kat.-Nr. K24



Kat.-Nr. K26



Kat.-Nr. K28



Kleidungszubehör: Schnallen (Kat.-Nr. K19-K23), Schuhnägel (Kat.-Nr. K24-K27). Bronze (Kat.-Nr. K28), sonst Eisen. M 1:1.



Rückseite



Vorderseite

Kat.-Nr. Z1: Spiegel

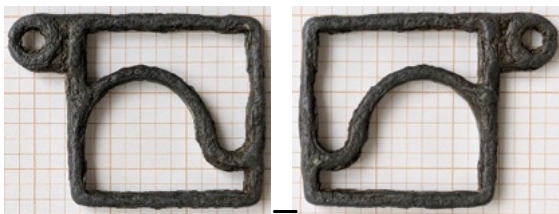


Rückseite



Vorderseite

Kat.-Nr. Z2: Tintenfasdeckel



Kat.-Nr. Z9



Kat.-Nr. Z10

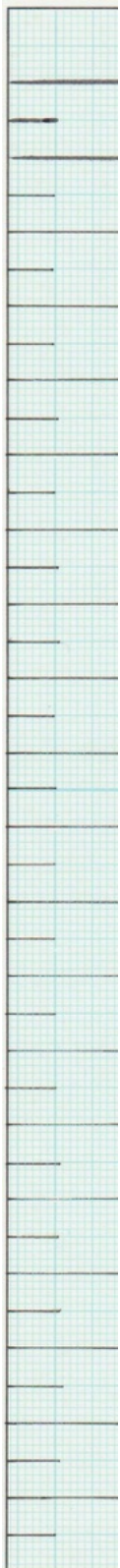


Kat.-Nr. Z3



Kat.-Nr. Z11

Sonstige persönliche Gegenstände. Eisen (Z11), sonst Bronze. M 1:1.



Kat.-Nr. Z4



Kat.-Nr. Z7



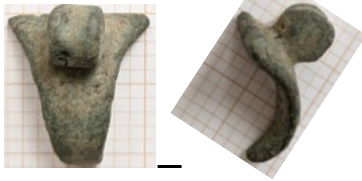
Kat.-Nr. Z5



Kat.-Nr. Z6



Kat.-Nr. Z8



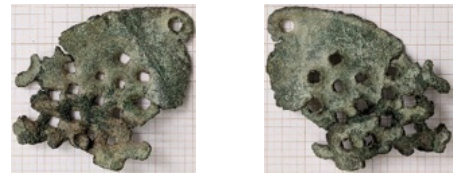
Kat.-Nr. G1



Kat.-Nr. G2



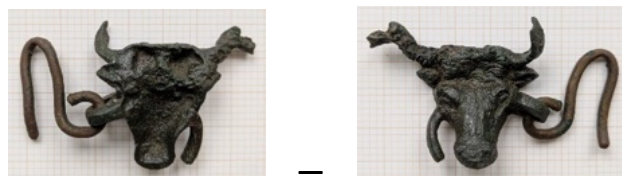
Kat.-Nr. G3



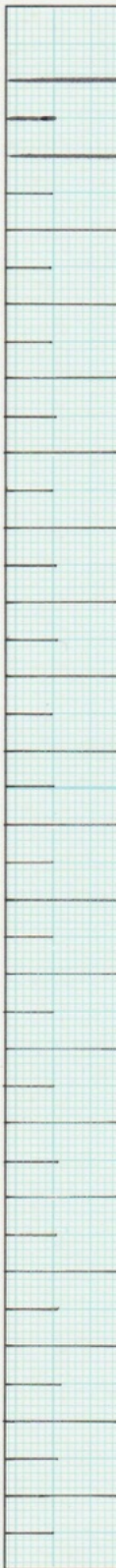
Kat.-Nr. G5



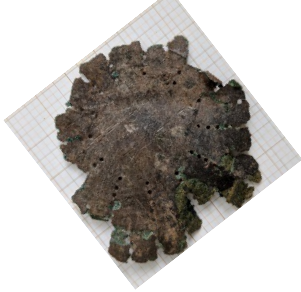
Kat.-Nr. G6



Kat.-Nr. G7

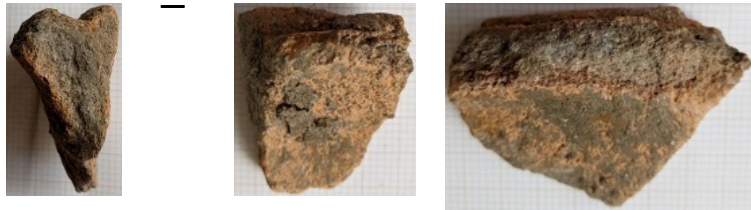
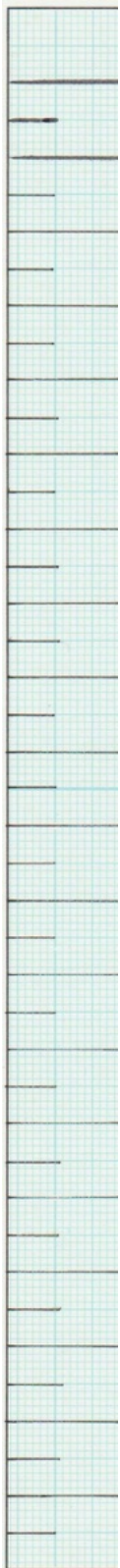


Unterseite



Kat.-Nr. G4





Kat.-Nr. G9



Kat.-Nr. G10



Kat.-Nr. G8



Randscherbe

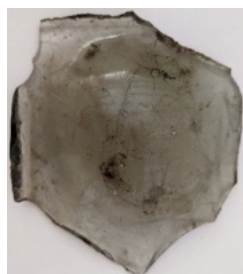
Kat.-Nr. G12



Bodenscherbe



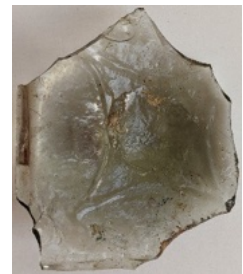
Kat.-Nr. G11



Innen



Seite

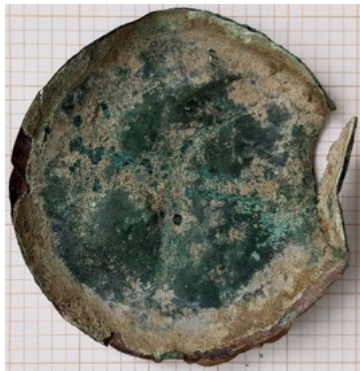


Boden

Kat.-Nr. G14



Kat.-Nr. Gs1



Kat.-Nr. Gs2

Kat.-Nr. Gs8



Kat.-Nr. Gs3



Kat.-Nr. Gs6



Kat.-Nr. Gs4

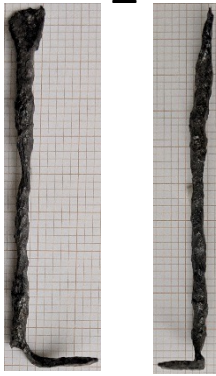
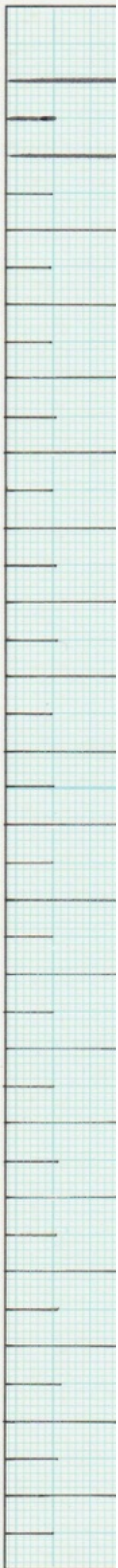


Kat.-Nr. Gs5



Kat.-Nr. Gs7

Gerätschaften: Bestandteile von Waagen. Bronze (Gs1-Gs2, Gs8).  
Bleilegierung (Gs3-Gs7). M 1:1.



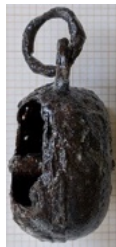
Kat.-Nr. Gs13



Kat.-Nr. Gs14



Kat.-Nr. Gs16



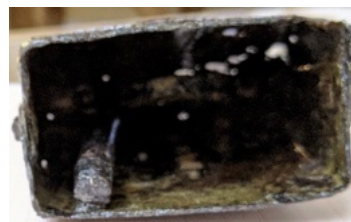
Kat.-Nr. Gs17



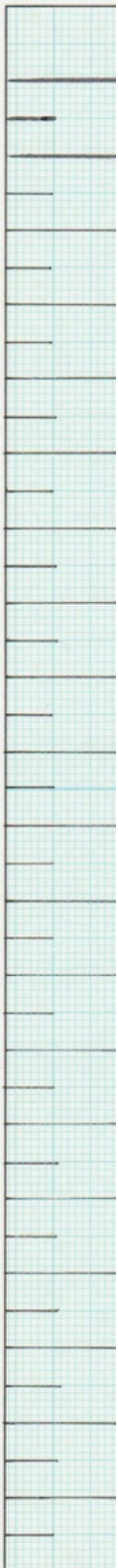
Kat.-Nr. Gs15



Kat.-Nr. Gs12



Gerätschaften: Bestandteile von Waagen (Gs13-Gs17). -  
Glocke (Gs12). Eisen. M 1:2.



Kat.-Nr. Gs9

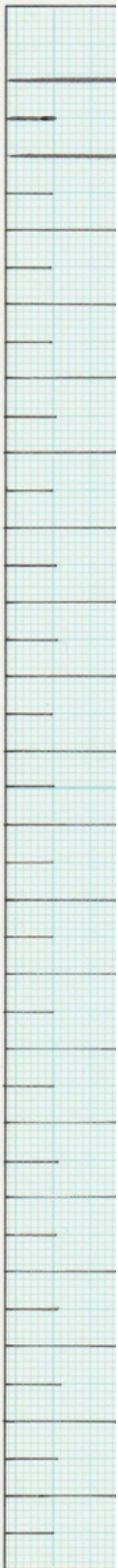


Kat.-Nr. Gs10

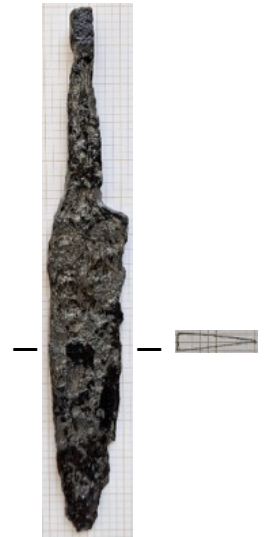


Fragmente einer Glocke  
Kat.-Nr. Gs11

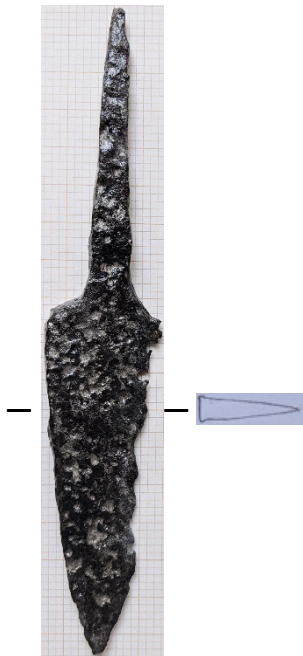




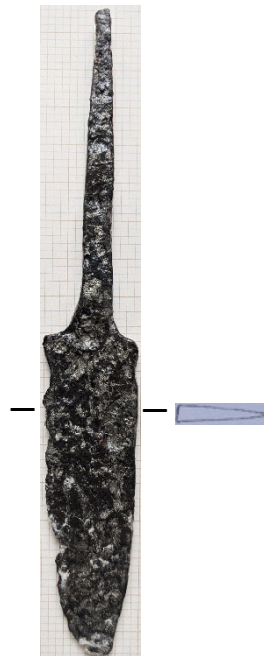
Kat.-Nr. Gs18



Kat.-Nr. Gs19



Kat.-Nr. Gs20



Kat.-Nr. Gs21



Kat.-Nr. Gs23



Kat.-Nr. Gs24

Kat.-Nr. Gs25



Kat.-Nr. H1

Kat.-Nr. H2



Gerätschaften: Wetzsteine (Gs24, Gs25). Sandstein. M 1:2.  
- Hauszubehör. Eisen (H1). M 1:2./Bronze (H2). M 1:1.



Kat.-Nr. H5



Kat.-Nr. H3



Kat.-Nr. H4



Kat.-Nr. H6



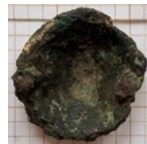
I



Kat.-Nr. H7



Kat.-Nr. H8



Kat.-Nr. H9



Kat.-Nr. H12



Kat.-Nr. H10



Kat.-Nr. H11



I



Kat.-Nr. H13

Hauszubehör: Zierknöpfe/Möbelteile. Bronze (H5-H8, H9, H12, H13).  
Bleilegierung (H10, H11). M 1:1.



Kat.-Nr. H15



Kat.-Nr. H14



Kat.-Nr. H16



Kat.-Nr. H17



Kat.-Nr. H20



Kat.-Nr. H22



Kat.-Nr. H19



Kat.-Nr. H21



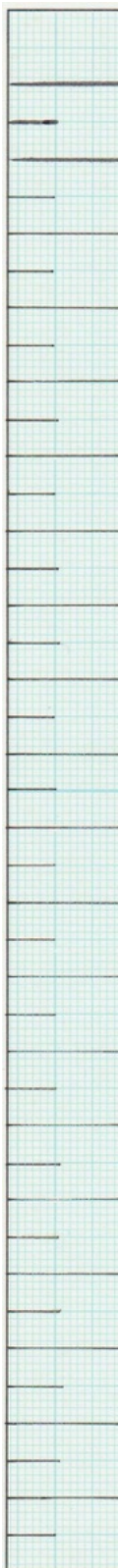
Kat.-Nr. H18



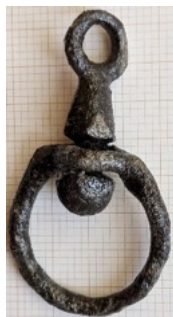
Kat.-Nr. H23-H29

Verbindungselemente. Bronze (H14, H15). Sonst Eisen. M 1:2.





Kat.-Nr. H30



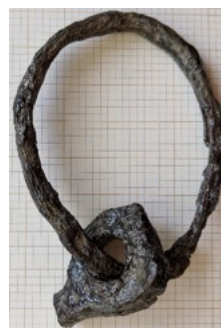
Kat.-Nr. H31



Kat.-Nr. H32



Kat.-Nr. H33



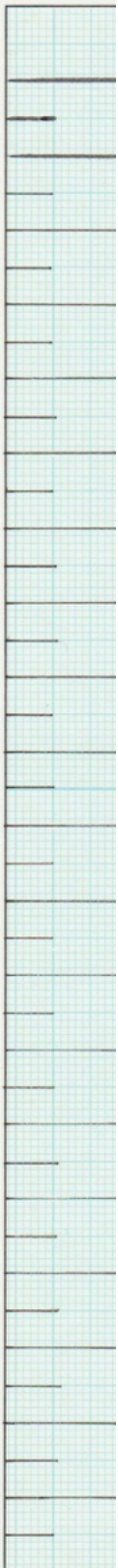
Kat.-Nr. H34



Kat.-Nr. H35



Kat.-Nr. H36



Kat.-Nr. T8



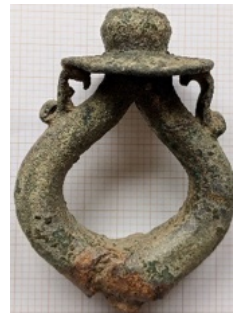
Kat.-Nr. T9



Kat.-Nr. T10



Kat.-Nr. T3



Kat.-Nr. T2



Kat.-Nr. T1



Kat.-Nr. T4a



Kat.-Nr. T4b



Kat.-Nr. T4c



Kat.-Nr. T4d



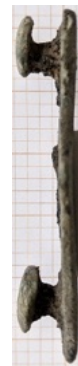
Kat.-Nr. T4e



Kat.-Nr. T4f



Kat.-Nr. T4g



Kat.-Nr. T4h



Kat.-Nr. T4k



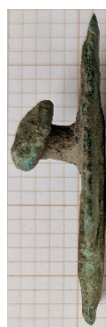
Kat.-Nr. T4l



Kat.-Nr. T4i



Kat.-Nr. T5



Kat.-Nr. T6



Kat.-Nr. T7



Kat.-Nr. T11



Kat.-Nr. T12



Kat.-Nr. T13



Kat.-Nr. T14



Kat.-Nr. T15



Kat.-Nr. T19



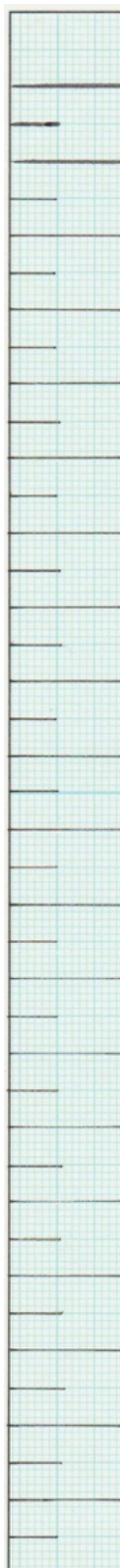
Kat.-Nr. T16

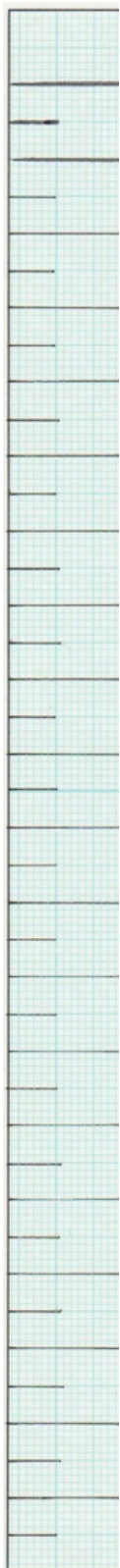


Kat.-Nr. T17



Kat.-Nr. T18





Kat.-Nr. L1



Kat.-Nr. L2



Kat.-Nr. L7

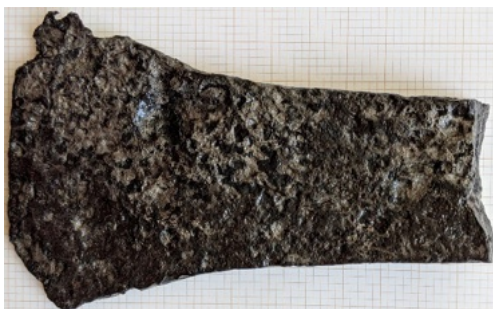


Kat.-Nr. L3

Landwirtschaft. Eisen (L3, L7). M 1:2. - Bleilegierung (L1, L2). M 1:1.



Kat.-Nr. L5



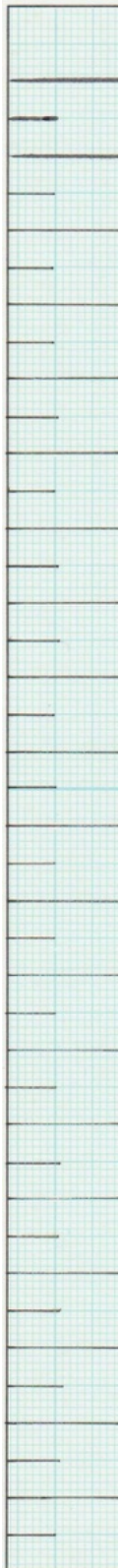
Kat.-Nr. L4



Kat.-Nr. L8



Kat.-Nr. L6



Kat.-Nr. W29



Kat.-Nr. W30



Kat.-Nr. W1



Kat.-Nr. W2



Kat.-Nr. W4



Kat.-Nr. W3



Handwerk. Bronze (W1, W29, W30). M 1:1.- Eisen (W2-W4). M 1:2.





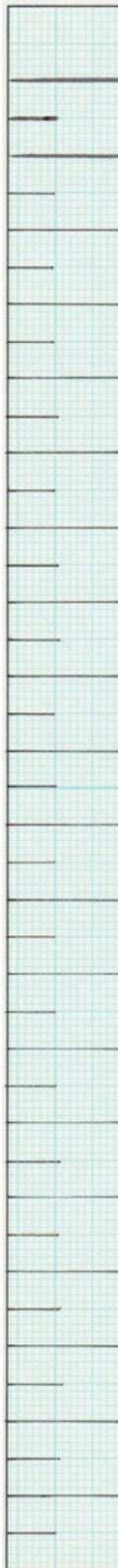
Kat.-Nr. W5

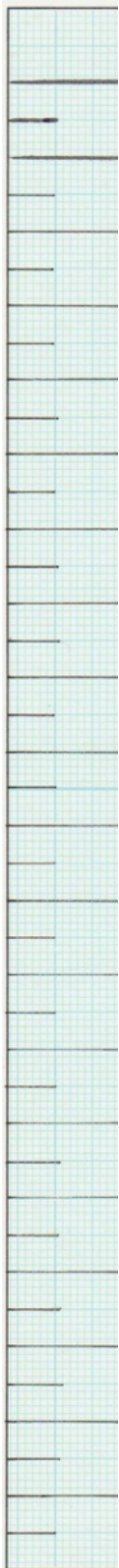


Kat.-Nr. W6



Kat.-Nr. W7

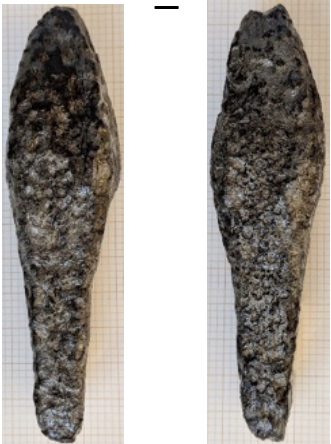




Kat.-Nr. W8



Kat.-Nr. W10



Kat.-Nr. W12



Kat.-Nr. W11



|



Kat.-Nr. W9



Kat.-Nr. W13



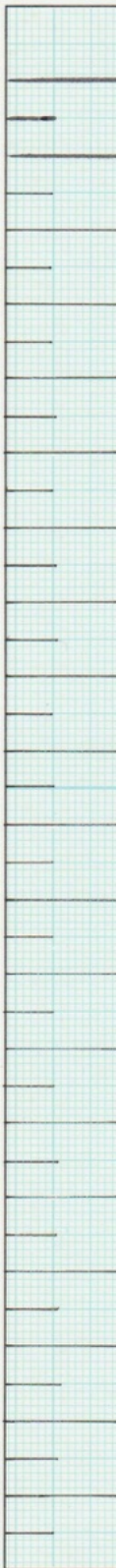
Kat.-Nr. W14



Kat.-Nr. W15



Kat.-Nr. W19



Kat.-Nr. W16



Kat.-Nr. W17



Kat.-Nr. W18



Kat.-Nr. W31



Kat.-Nr. W32



Kat.-Nr. W20



Kat.-Nr. W21



Kat.-Nr. W22



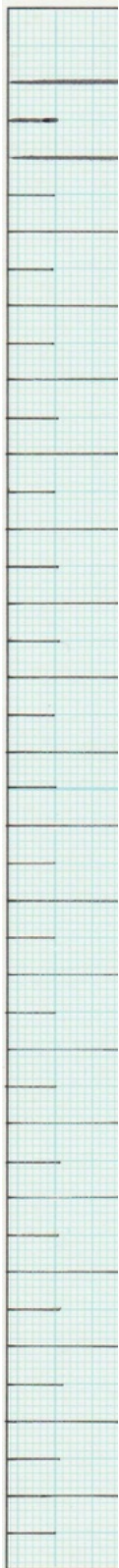
Kat.-Nr. W24



Kat.-Nr. W25



Kat.-Nr. W23



|



Kat.-Nr. W26



|



Kat.-Nr. W27



|



Kat.-Nr. W35



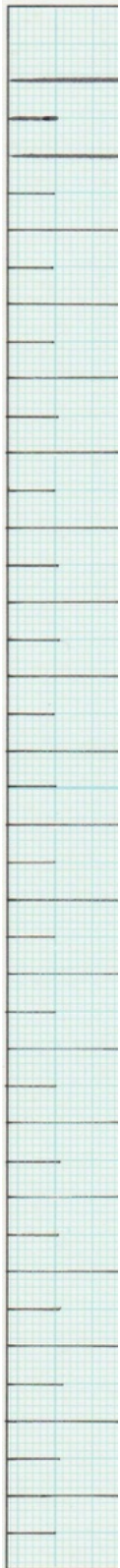
|



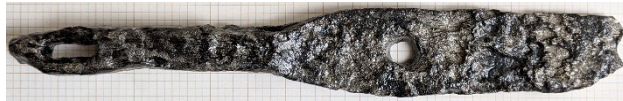
Kat.-Nr. W37



Kat.-Nr. W34



I



Kat.-Nr. W38



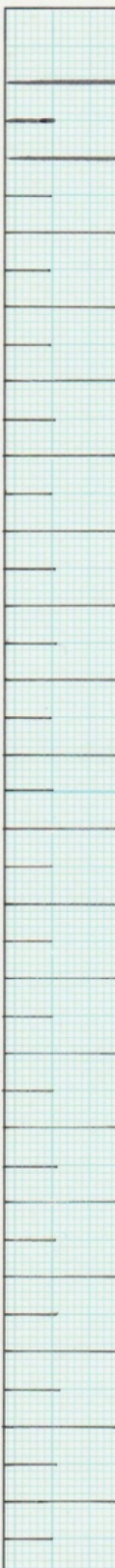
Kat.-Nr. W39



Kat.-Nr. W40



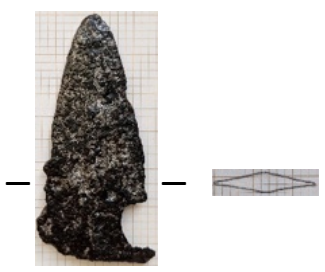
Kat.-Nr. W41



Kat.-Nr. WF1

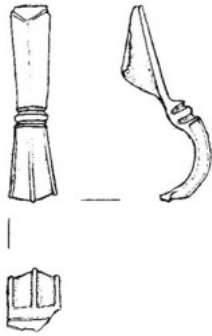


Kat.-Nr. WF2

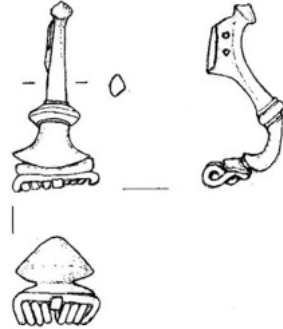


Kat.-Nr. WF3





B1: Augenfibel (Fz-Nr. 6)



B3: Almgren 68 (Fz-Nr. 29)



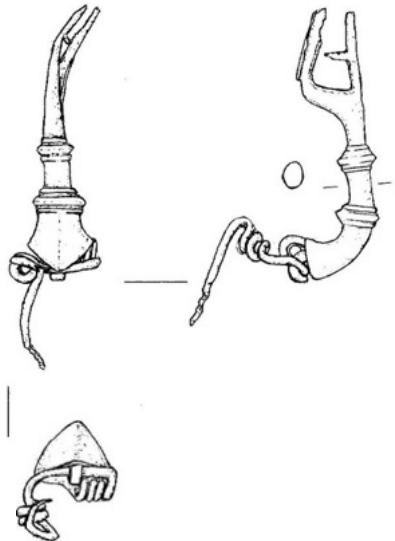
B2: Hülsenscharnierfibel  
(Fz-Nr. 16)



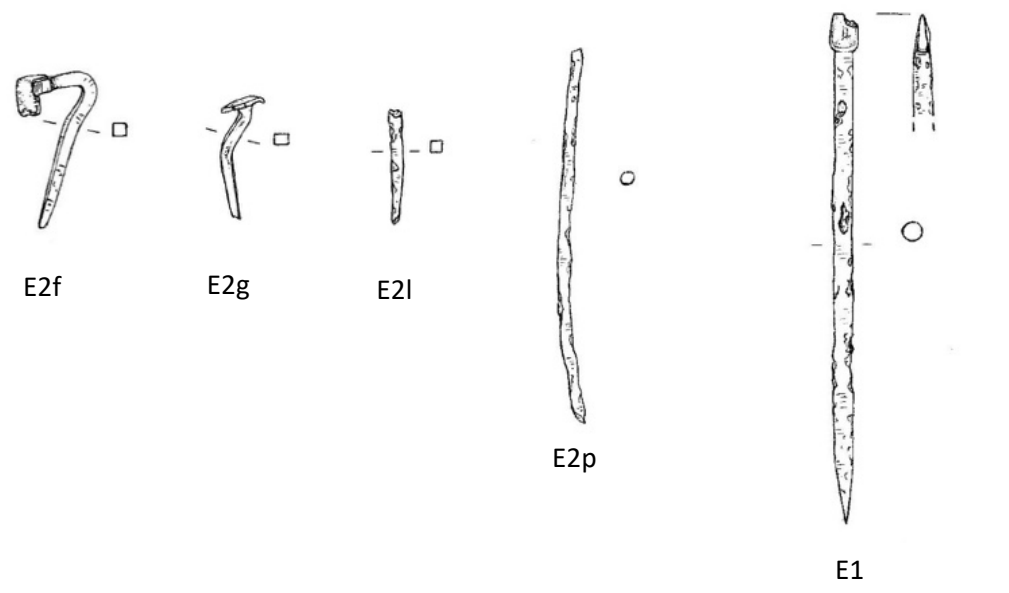
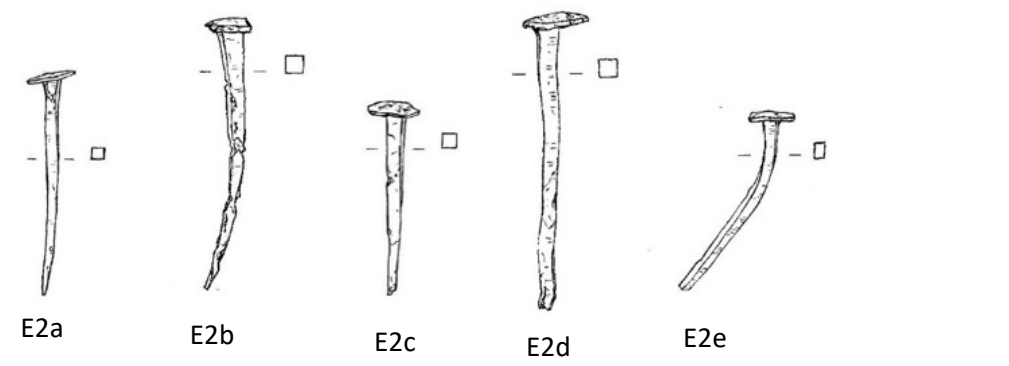
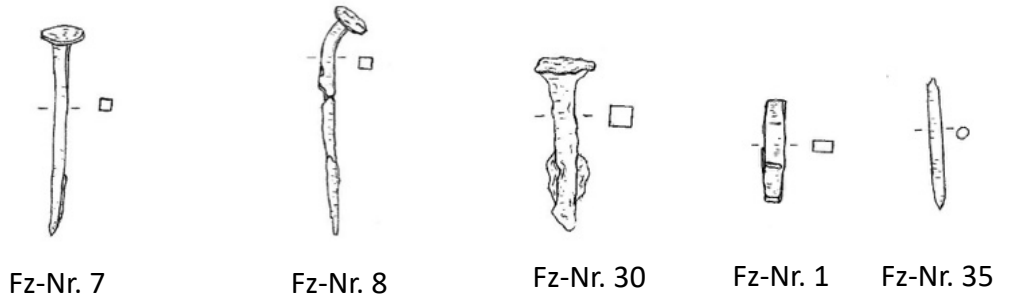
Zu B3: Fibelnadel (Fz-Nr. 31)



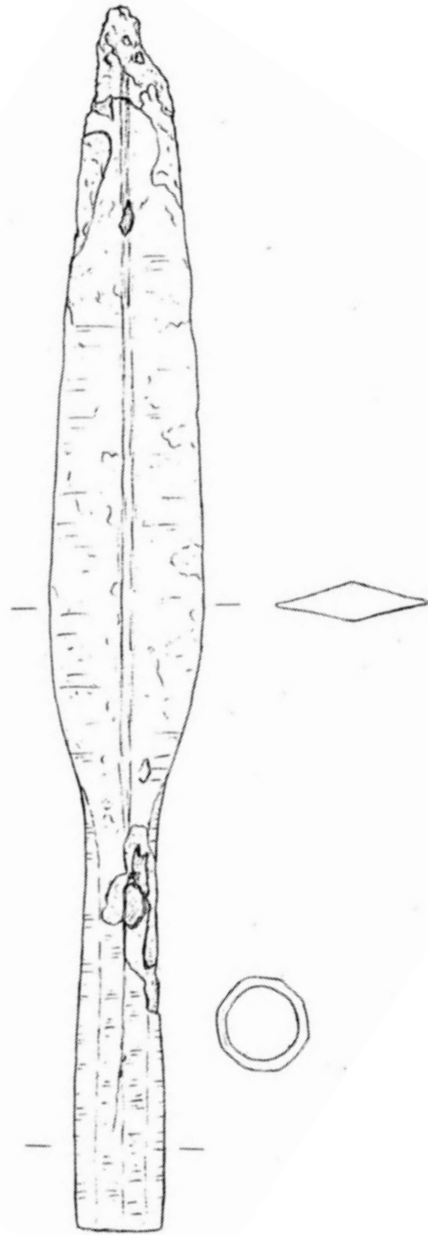
B6: Fibelteil? (Fz-Nr. 44)



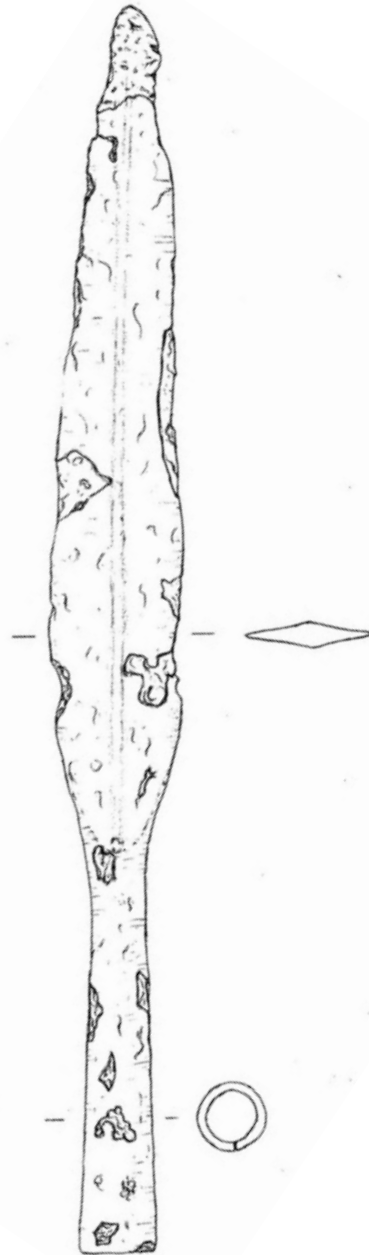
B4: Doppelknopffibel (Fz-Nr. 22)



Brandgrab Leitenberg-SO: Stilus (E1) – sonst Nägel. Eisen. M 1:2

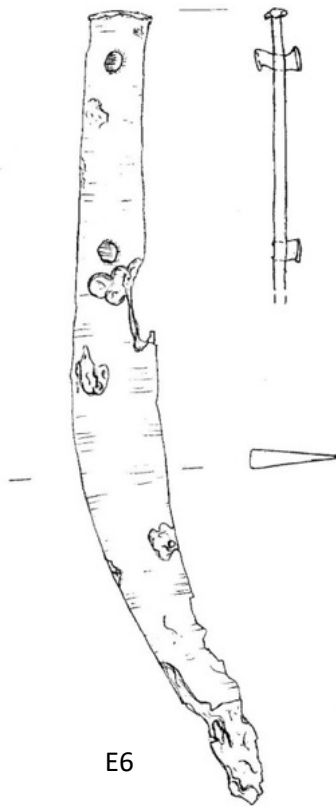


E4



E5

Brandgrab Leitenberg-SO. Lanzenspitze (Sondenfund). Eisen. M 1:2.

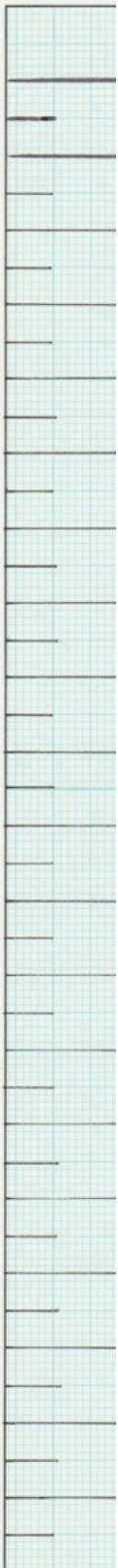


E6



E3

Brandgrab Leitenberg-SO. Messer (E6, Sondenfund). Eisen. M 1:2 –  
Schuhnägel (E3, Grabfund). Eisen. M 1:1.



Aufsicht

I

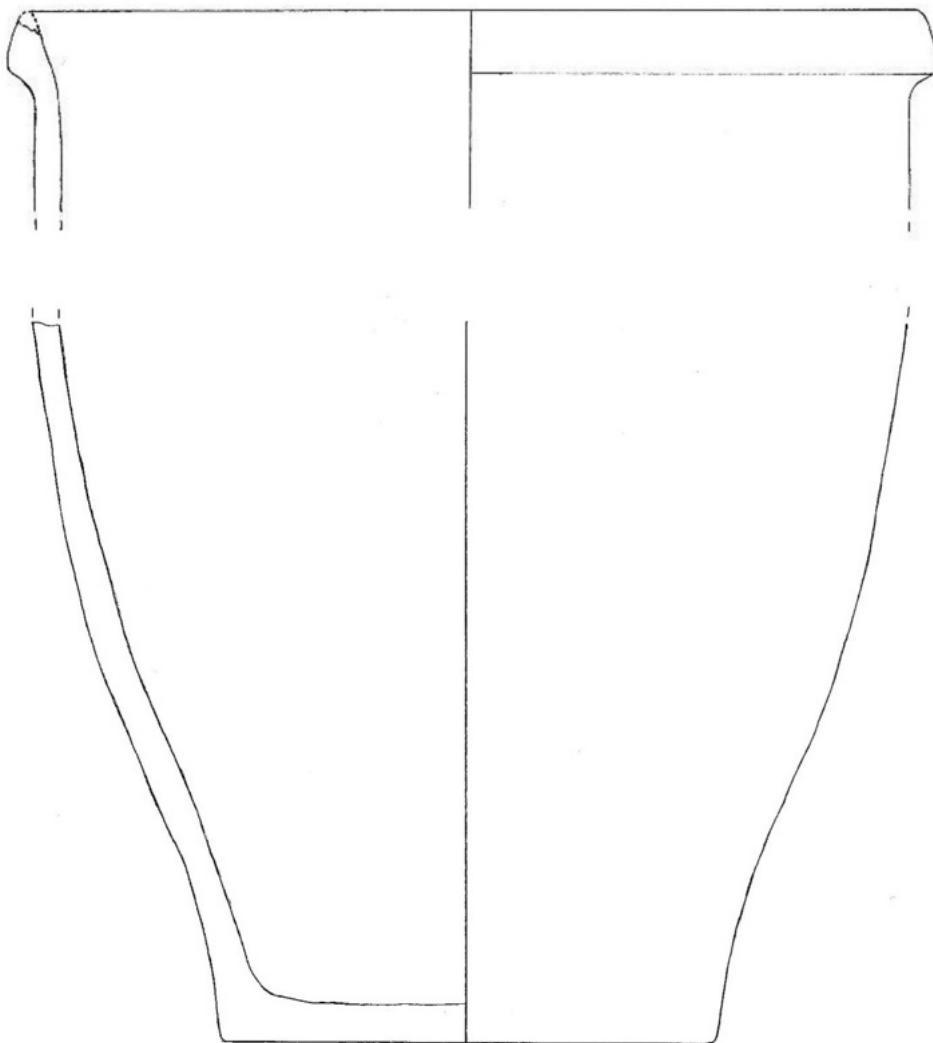


Rückseite

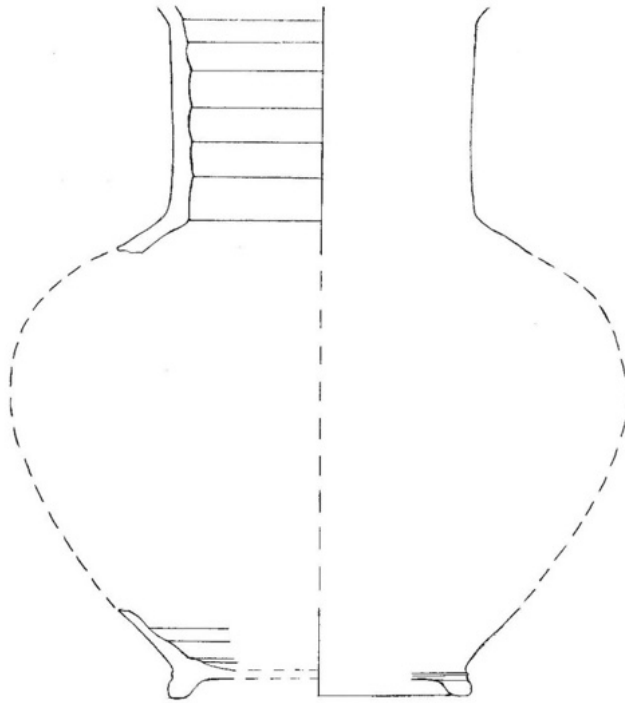


Vorderseite: rechts glatte Fläche mit weißem Anstrich

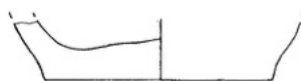
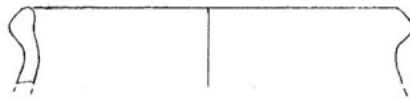
Brandgrab Leitenberg-SO: Mörtelbruchstück (Grabfund). M 2:1.



Gef. 3

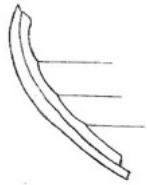


Gef. 1 (Fz-Nr. 46, 47, 55)



Gef. 2 (Fz\_Nr. 62)





Gef. 4 (Fz-Nr. 27, 55, 56)



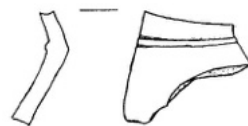
Gef. 5 (Fz-Nr. 14)



Gef. 6 (Fz-Nr. 14)



Gef. 7 (Fz-Nr. 14)



Gef. 9 (Fz-Nr. 18)



Gef. 8 (Fz-Nr. 15)



Gef. 11 (Fz-Nr. 11)



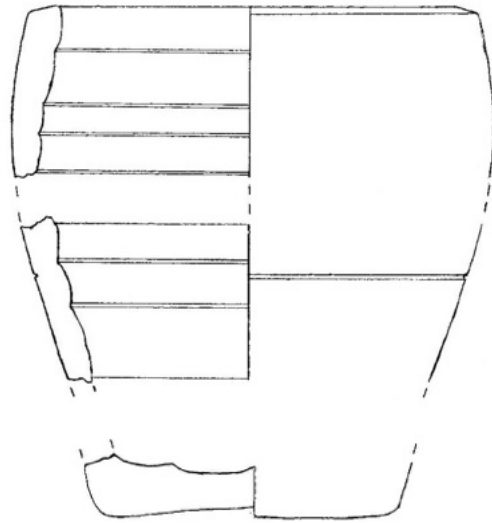
Gef. 10 (Fz-Nr. 11)

Brandgrab Leitenberg-SO. Keramik von außerhalb der Grabgrube. M 1:2.

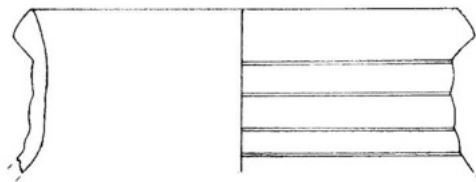


Gef. 13 (Fz-Nr. 37)

Brandgrab Leitenberg-SO. Keramik aus Befund 3. M 1:2.



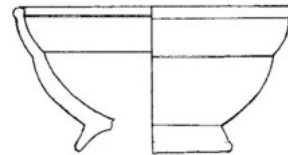
Gef. 19 (Fz-Nr. 23)



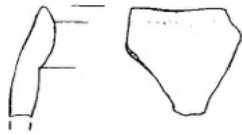
Gef. 20 (Fz-Nr. 23)



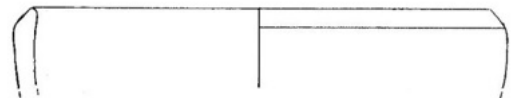
Gef. 14 (Fz-Nr. 61)



Gef. 16 (Fz-Nr. 61)



Gef. 15 (Fz-Nr. 61)



Gef. 17 (Fz-Nr. 61)



Gef. 21 (Fz-Nr. 60)

Rückseite Seite Unterseite Aufsicht



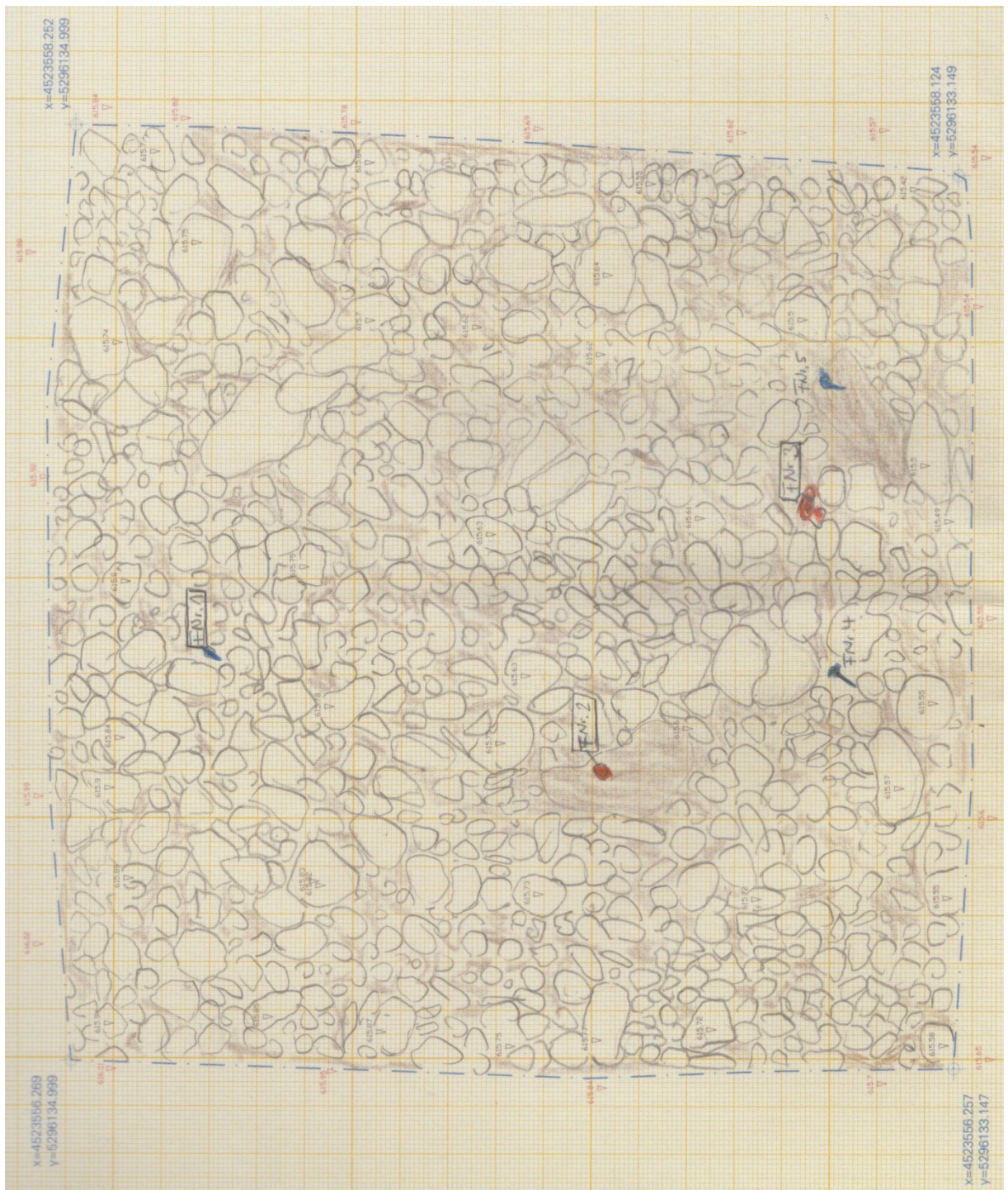
Terrakotta 1 (Fz-Nr. 61)

Seite Unterseite Aufsicht

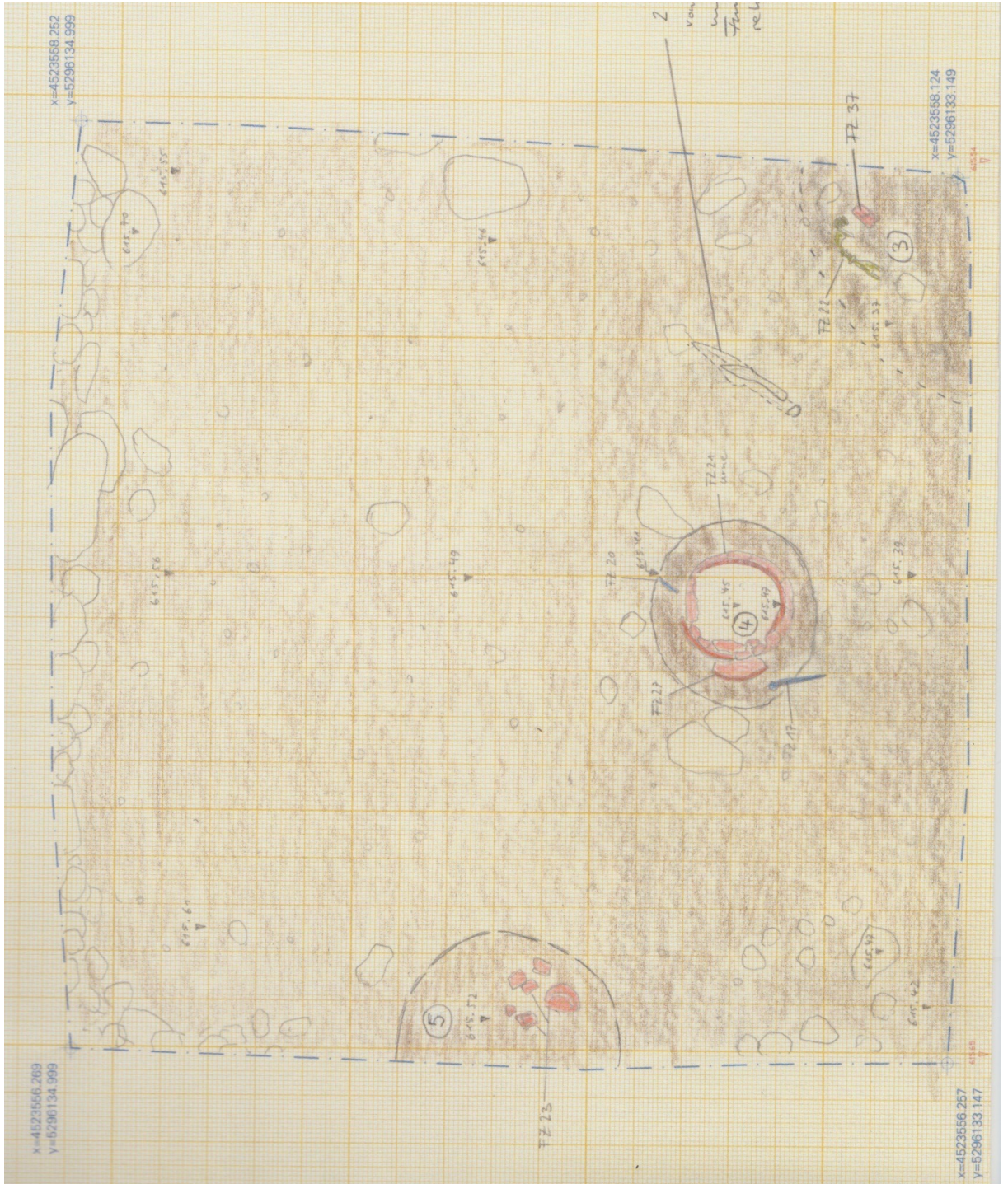


Terrakotta 2 (Fz-Nr. 61)

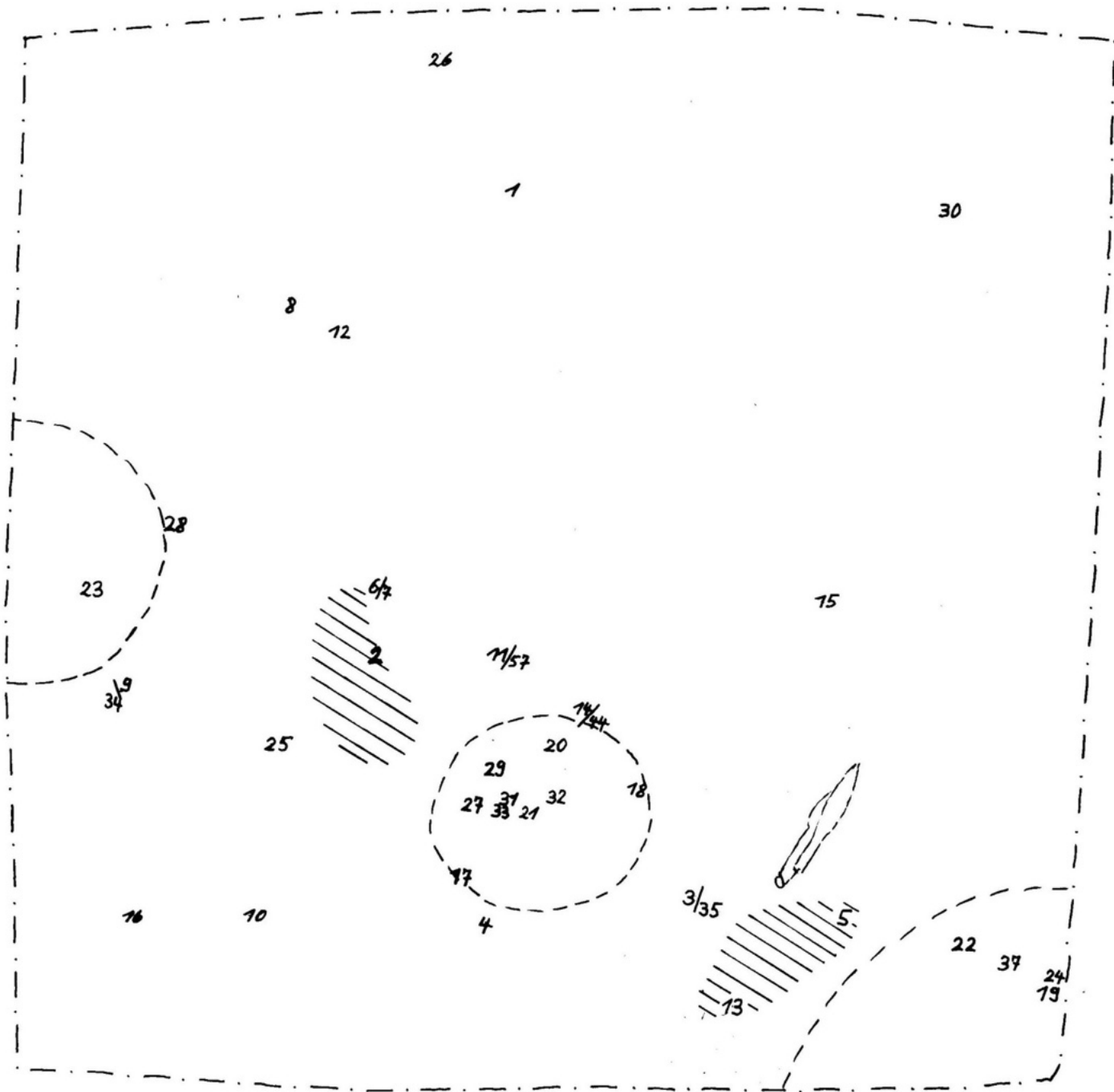
Gef. 22



Brandgrab Leitenberg-SO. Ausgrabungsplan, Schnitt 1, Planum 1. M 1:10.



Brandgrab Leitenberg-SO. Ausgrabungsplan, Schnitt 1, Planum 2. M 1:10.



Brandgrab Leitenberg-SO. Schnitt 1, Planum 2 mit Lage der eingemessenen Fundstücke (Fundzettelnummern). Zwei steinfreie Bereiche (schraffiert), Die Sondenfunde (Lanzen/Messer) wurden nachträglich ungefähr eingezeichnet. M 1:10.